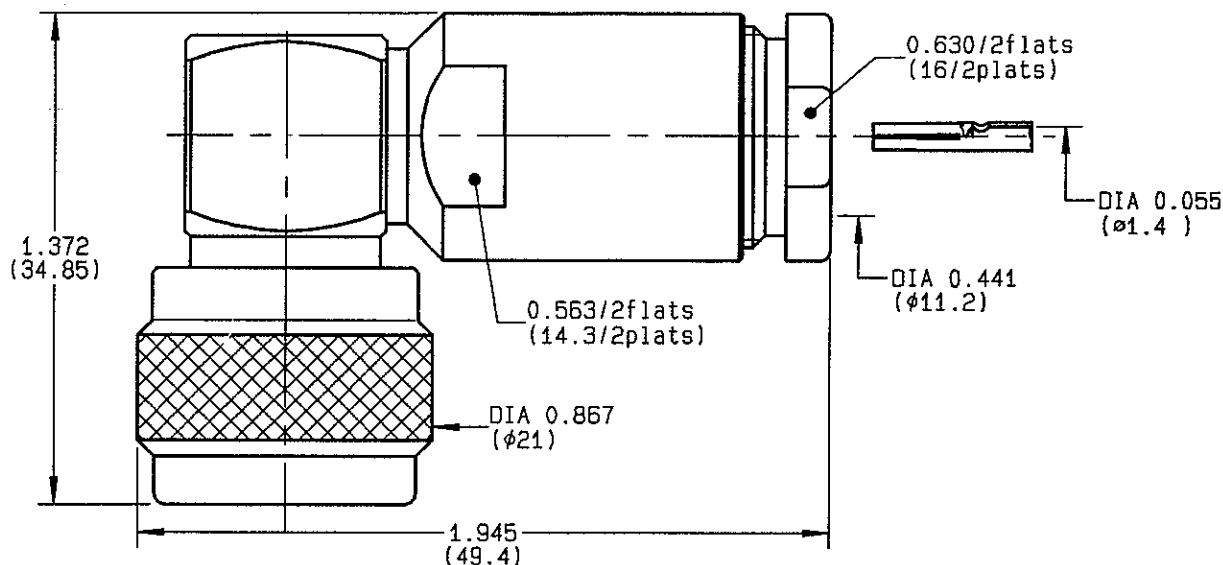


**RIGHT ANGLE PLUG CLAMP TYPE
CABLE 10+11/75**

R162.168.000
SERIES N 75



| | |
|---------------------------------|-------------------------------|
| NOMINAL IMPEDANCE | 75 Ω |
| FREQUENCY RANGE | 0-1.5 GHz |
| TEMPERATURE RATING | -55/+155 °C |
| V.S.W.R | 1.1 + x F(GHz)Maxi |
| RF INSERTION LOSS | 0.15 \sqrt{F} (GHz) dB Maxi |
| VOLTAGE RATING | 1400 Veff Maxi |
| DIELECTRIC WITHSTANDING VOLTAGE | 2500 Veff Mini |
| INSULATION RESISTANCE | 5000 M Ω Mini |
| HERMETIC SEAL | NA Atm.cm ³ /s |
| LEAKAGE (pressurized only) | NA |
| MECHANICAL DURABILITY | 500 Cycles |
| WEIGHT | 69.9 gr |
| SPECIFICATION | |

CABLES : **KX 8**
RG 11
RG 144
RG 216

OTHERS CHARACTERISTICS

| | |
|----------------------------|--------------|
| CABLE RETENTION | 200 N Mini |
| CENTER CONTACT RETENTION | |
| Axial force - mating end | 27 N Mini |
| Axial force - opposite end | 27 N Mini |
| Torque | NA cm.N Mini |
| RECOMMENDED TORQUES | |
| Mating | 130 cm.N |
| Panel nut | NA cm.N |
| Clamp nut | 500 cm.N |

| CONNECTOR PARTS | MATERIALS | FINISH | (all values are given) in micrometers |
|-----------------|------------------|------------------------|---|
| BODY | BRASS | BBR 2 | |
| OUTER CONTACT | BRASS | BBR 2 | |
| CENTER CONTACT | BERYLLIUM COPPER | GOLD 0.5 OVER NICKEL 2 | |
| INSULATOR | PTFE | - | |
| GASKET | - | - | |
| OTHERS PIECES | BRASS | BBR 2 | |

| | | |
|---------|---------------|------------------|
| ISSUE | CREATION DATE | FILE PART-NUMBER |
| 9813G01 | 05-APR-94 | EPC 96-07 |



GAUT

The information given here is subject to change without notice.
Design changes may be in order to improve the product .

Connect to the future

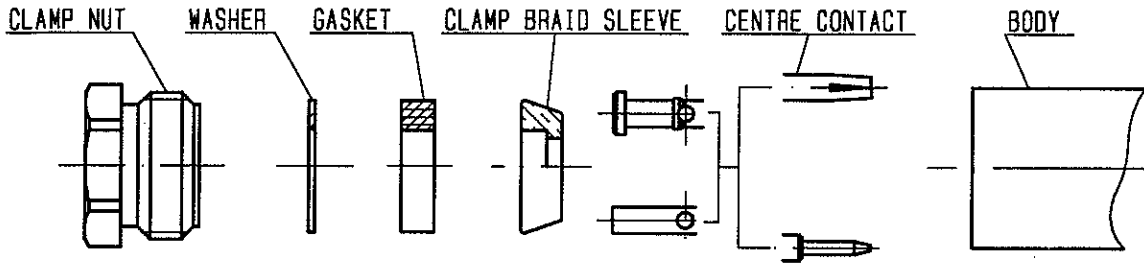


RADIALL®

R162.168.000

ISSUE 9813G01

SERIES N 75



①

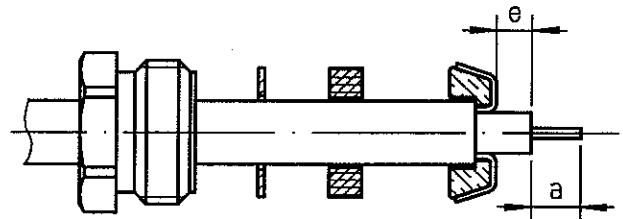
Strip the cable .



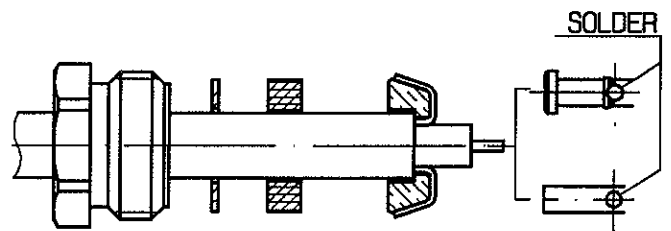
| Stripping | a | b | c | d | e |
|-----------|-------|-------|---|---|-------|
| inch | 0.157 | 0.335 | 0 | 0 | 0.039 |
| mm | 4 | 8.5 | | | 1 |

②

Slide the clamp nut , the washer and the gasket onto the cable .
 Slide clamp braid sleeve over braid .
 Fold back braid and trim off surplus braid .
 Trim back dielectric as shown .

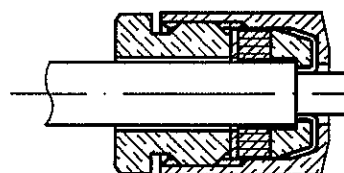


Solder the cable inner conductor into centre contact .



④

Screw sub-assembly into the connector body .
 (recommended coupling torque 44.25 in.lb)



Hex. : 0.63/flats